



First discard : Italian or Roman Discard

First discard : Italian or also known as Roman Discard

Find an agreement with your P on what system to use as suit preference signalling. The Italian discard can convey many signals in NT or trump contracts
The rules are simple. When it's your 1st discard

- play **an odd card** showing interest for the discarded suit
- play **an even card** if you aren't interested in the discarded suit

You're not always going to have the appropriate card to show your Partner which suit he should play. Your P should be able to work out your signal with regards to the play that has already happened, bidding, cards at the dummy and the 1st few tricks played.



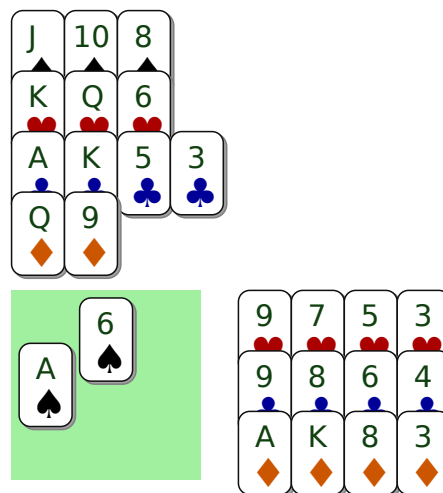
First discard : Italian or Roman Discard

Italian discard : 1st discard is an odd card.

When it's your first discard

play an odd card in the suit that you want your P to play.

S	W	N	E
1 ♠	Pass	4 ♠	Pass
Pass	Pass		



Exercise 2814 You're East playing defence; Your P leads with the Ace of Spade, discard the 3 ♦ By playing an odd ♦ card, showing your P that you're interested in this suit.



First discard : Italian or Roman Discard

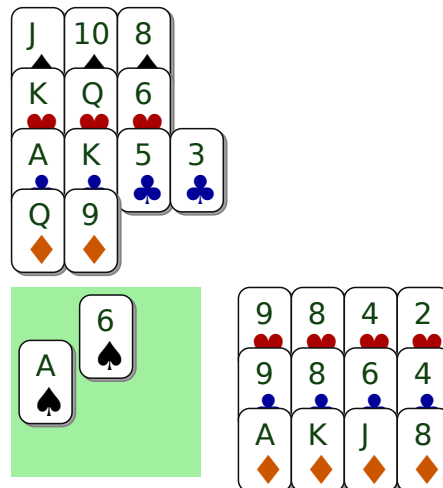
Italian discard : 1st discard is an even card.

By playing an even card, you're showing your P that you're not interested in this suit : if the discard is a high card, its a suit preference signal, not for trump.

- A **low** card is a suit preference signal **for the lowest of** the remaining suits.
- A **high** card is a suit preference signal **for the highest of** the remaining suits.

Be Careful! The player doesn't always have the proper card to refuse or signal suit preference. Partner needs to think back to the bidding sequence and the previous tricks played.

S	W	N	E
1 ♠	Pass	4 ♠	Pass
Pass	Pass		



Exercise 2815 You're East playing defence; Your P leads with the Ace of Spade, discard the 8 ♥ As you don't have an odd card to signal preference for ♦, use an even ♦ card to refuse this suit and signal for ♦, the highest of the remaining suits. You would play the 2 ♥ to signal preference for Clubs.



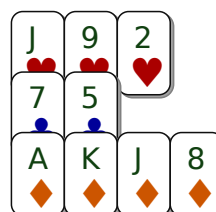
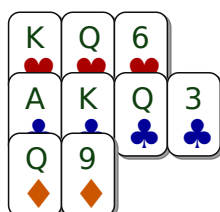
First discard : Italian or Roman Discard

You don't have the right card?

This can happen very often!

- Use the bidding sequence or the cards at dummy to signal your suit preference to your P.
- In the example below, you're East playing against a 3NT contract declared by South. South plays ♠ for the 4th round and you have to discard. You've no odd ♦ cards to signal for this suit. What card do you play?

S	W	N	E
1 NT	Pass	3 NT	Pass
Pass	Pass		



Exercise 2816 2 ♥ With no odd card to signal preference for ♦, play an even ♥ card to refuse this suit and signal for ♦. Your P knows how many points you have (+/- 2 points) and can count the points at dummy.