



Signalling - Attitude

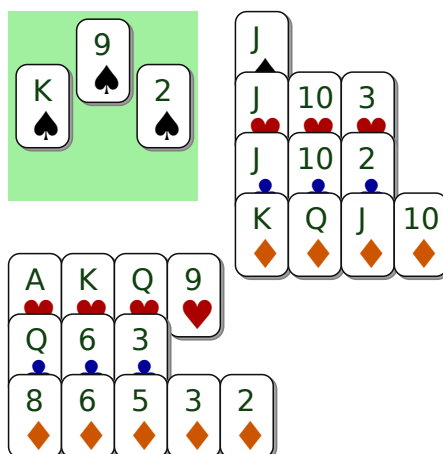
Attitude signalling on first discard

If you have no more cards in the suit played, you can call for another suit by playing a high, useless card in that suit:

- to ruff on next trick
- to rapidly cash in high card tricks in that suit

If your partner gets back in hand, he'll know which suit you are interested in !

S	W	N	E
	1 ♠	Pass	2 ♠
Pass	3 ♠	Pass	4 ♠
Pass	Pass	Pass	



problem Q12206 : Your partner leads the 7 ♦ against this ♥ contract. The declarer wins it from dummy and plays ♠, then ♠ again. You have no more ♠. Which card will you choose to discard ? The 9 ♥ to ask your partner to play that suit if he can !