



## Q lead in a NT contract

### King lead in a NT contract

Leading a K in a NT contract promises a very solid suit, with at least 4 cards... That's a "selfish" lead. Lead the K when you hold

- KQJ97
- KQ1096
- AKJ10

When you hold :

KQ 3rd, or even 4th lead the Q to makes the difference with a K lead.

Leading Q is looking for a complement in your partner's hand...

S	W	N	E
			1 NT
Pass	3 NT	Pass	Pass
Pass			



6	3	2	
K	Q	5	
6	5	4	
7	6	5	2

Exercise 3695 Q ♥. Your partner has around 10 HCP, most probably in the majors. Leading ♥ is a good idea. But the K would show a solid suit... The 5 would block the suit (K and Q would remain and communications would be impossible). Q is the only option.



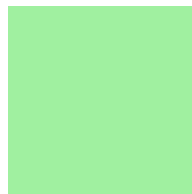
## Q lead in a NT contract

### Q lead in a NT contract

A Q lead shows 2 types of suit : with or without the K

- A 3 cards sequence, most of the time in a 4 carder. Par example, lead Q with QJ10x, and with QJ9x (broken sequence), but lead 2 with QJ62 (that's actually not a sequence)
- If you hold KQx, lead Q. A K lead would promise a minimum of 4 cards with 3 honors ! This happens in majors rather than in minors.

S	W	N	E
	1 NT	Pass	3 NT
Pass	Pass	Pass	



Q	J	9	8
9	7	4	
7	4	2	
K	6	2	

Exercise 3804 Q is the right choice. Top of a sequence takes priority over a 4th best card. The sequence is not perfect, but the 9 makes up for the 10. QJ108 would be a perfect sequence.

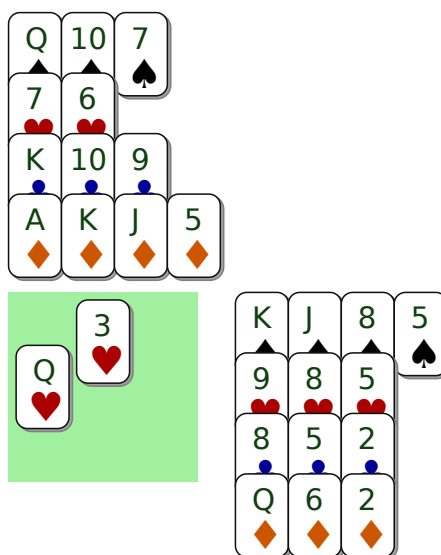


## Q lead in a NT contract

### Your partner's choice

Your partner will give an attitude signal. Zia's advice is to play a low spot card to show interest. Doing so, you save an intermediate card which could be useful later on. But make sure you and your partner agree on the same signal system ....

S	W	N	E
1 NT	Pass	3 NT	Pass
Pass	Pass		



Exercise 2129 When your partner leads a Q, or an Ace, you must play attitude. In this case, you don't have any honor. Deny the suit, play a high spot card : 9.

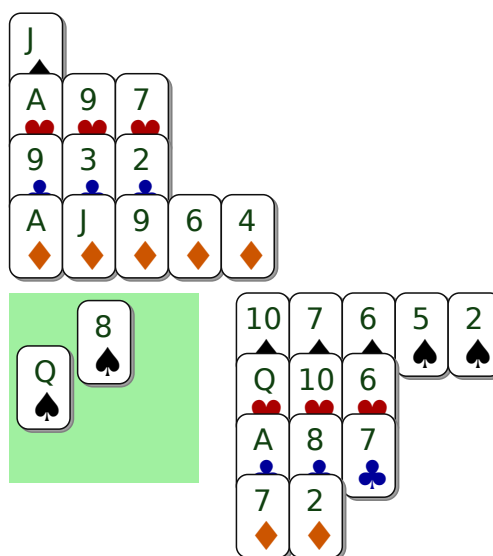


## Q lead in a NT contract

### Your partner's choice

Example

S	W	N	E
1 NT	Pass	3 NT	Pass
Pass	Pass		



Exercise 4599 You see dummy... and J ♠. Therefore you understand your partner has led for you..with KQ. Play a low spot card, 2 ♠, to show a definite interest in the suit !