



## Safe handling of the dummy's long suit in NT contracts

### Safe handling of the dummy's long suit in NT contracts

The fear of an unfavorable split of the opps cards in your dummy's long suit should lead you to use safety maneuvers when you don't have many dummy entries.

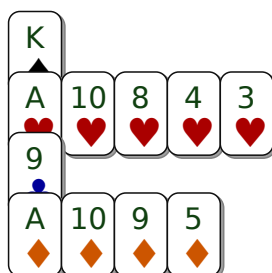
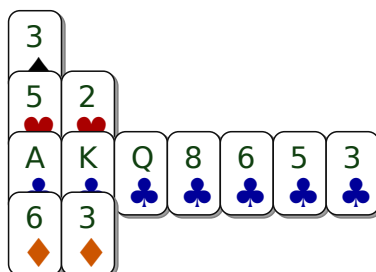
In fact, you should not aim to maximize the number of tricks, but to ensure that the contract makes.

- The rule = Anticipate. To fight effectively against an unfavorable split of the opps cards, you must have anticipated it!
- Implementation : Adopt one of the 3 insurance techniques :
  - The probe
  - The safety finesse
  - Ducking

Example of a probe.

You are the declarer of a 3NT contract. West lead the Jack ♠ that you took with the Ace. You have just played the 2 ♣ from your hand, West supplies the 4 ♦.

S	W	N	E
1 ♥	Pass	2 ♣	Pass
2 ♦	Pass	3 ♣	Pass
3 NT	Pass	Pass	Pass



#### Exercise 3985

You have 9 cards in ♦ ♣ : East has 4 cards with the Jack (that can't be captured). As you only have one dummy entry with the 9 ♣, play a small ♣ and let East get his trick. He'll only have 3 cards left in ♣ and the dummy

Find us on [iBridge.co](https://iBridge.co) to improve your bridge performance.

By playing practice boards, accessing lessons, tips and review sheets targeted just for you.



has Ace King Queen, and you have the 9 to get to dummy....Your contract is cold

---

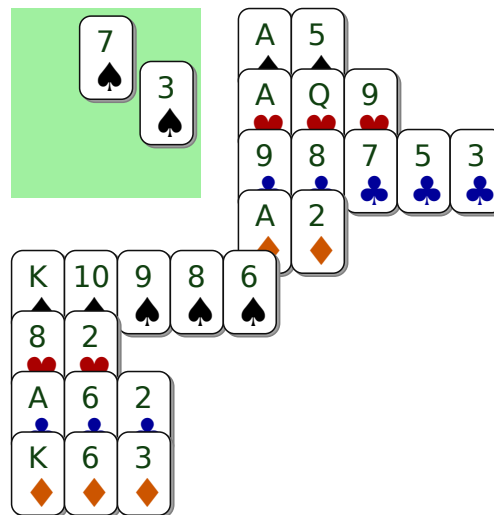


## Safe handling of the dummy's long suit in NT contracts

### Ducking example

You are in defense in that NT contract SA. You overcalled 1 ♠, and your partner, logically leads ♠, the 7.  
Which card will you play ?

S	W	N	E
			1 ♣
1 ♠	2 NT	Pass	3 NT
Pass	Pass	Pass	



#### Exercise 27351

How can you establish 3 tricks in ♠ ? by not playing the King on the first trick; When your partner gets back in hand, he'll probably have a ♠ left. You could also get back in hand with the Ace ♣ to cash in the remaining ♠.



## Safe handling of the dummy's long suit in NT contracts

### Safety finesse example

You are in South, as declarer of a 4♥ contract. the LHO lead the Ace ♠ followed by the King ♣. You take it with the Ace and play a small ♥ from the dummy. Which card do you play, The Ace or the 9?

S	W	N	E
	1♦	Pass	Pass
4♥	Pass	Pass	Pass

Q	J	7	6
♠	♠	♠	♠
6	5	2	
♥	♥	♥	
A	5	3	
♣	♣	♣	
8	4	3	
♦	♦	♦	

A			
♠			

9	3					
♠	♠					
A	K	J	10	9	4	3
♥	♥	♥	♥	♥	♥	♥
J						
♣						
A	K	7				
♦	♦	♦				

#### Exercise 27151

Play the 9♥ and never the Ace. The direct finesse to the Queen♥ is a safety finesse. If it works, you have your 10 tricks. If it fails, the♥ are split 2-1 and you have an entry to go get the Queen♠ (Your 6th card in C0 will be established after you have cashed in your Ace♥)